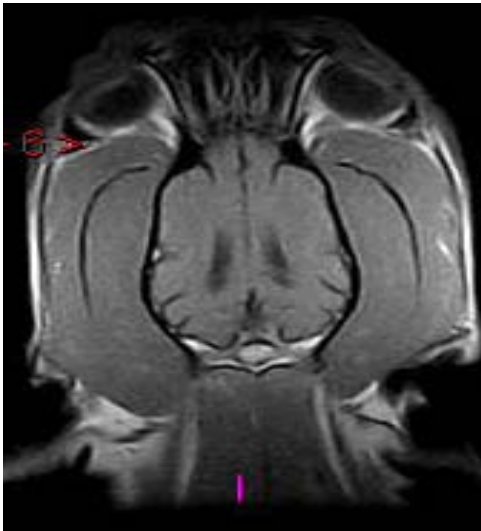
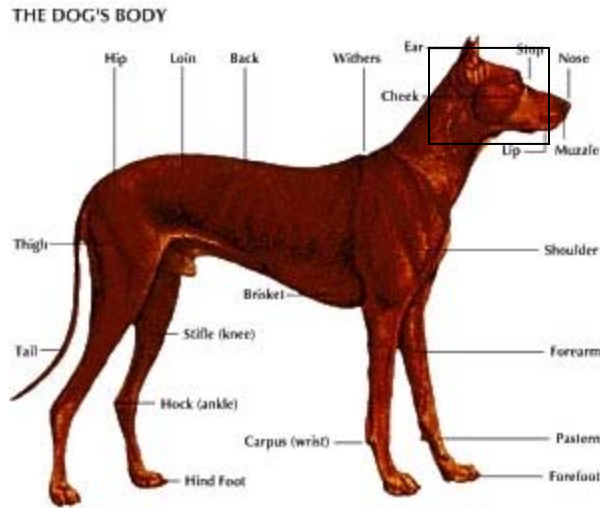


## Small Animal MRI Studies – Anatomic Areas Included

### BRAIN (R2A01):

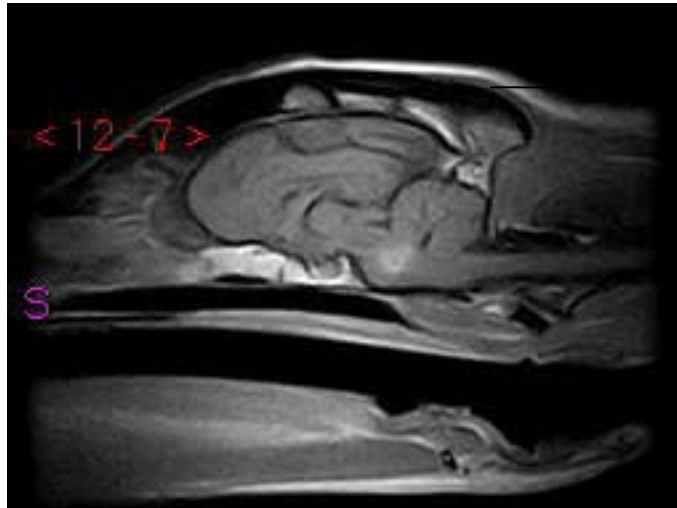
The brain and surrounding bone and soft tissue are the primary focus of this study. This study may be requested in order to find pathology such as; brain tumors, meningitis, hydrocephalus, and hemorrhaging. An MRI of the brain will include sequences in all planes: dorsal, transverse, and sagittal. Contrast may be given if necessary.



Brain Dorsal



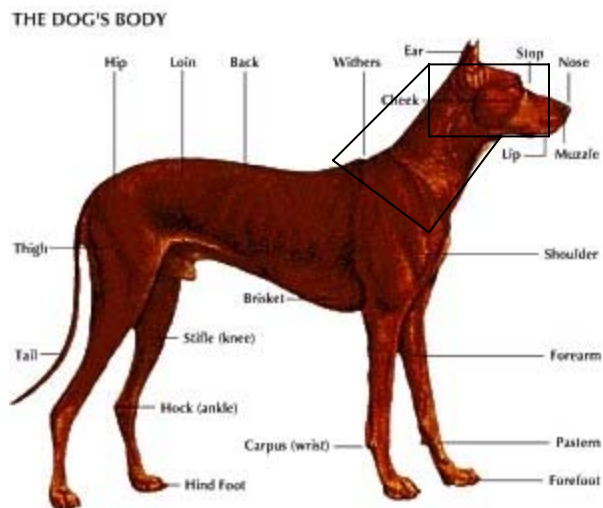
Brain Transverse



## Brain Sagittal

### [BRAIN and CERVICAL SPINE \(R2101\):](#)

The brain and the cervical spine, as well as the surrounding soft tissue are the primary focus of this study. An MRI of the cervical spine will encompass C1-T3. This study may be requested in order to find pathology within the brain as well as pathology relating to the cervical spine such as; IVDD, nerve root tumors, FCE's, and spinal neoplasia. An MRI of the brain and cervical spine will include sequences in all planes: dorsal, transverse, and sagittal. Contrast may be given if necessary.

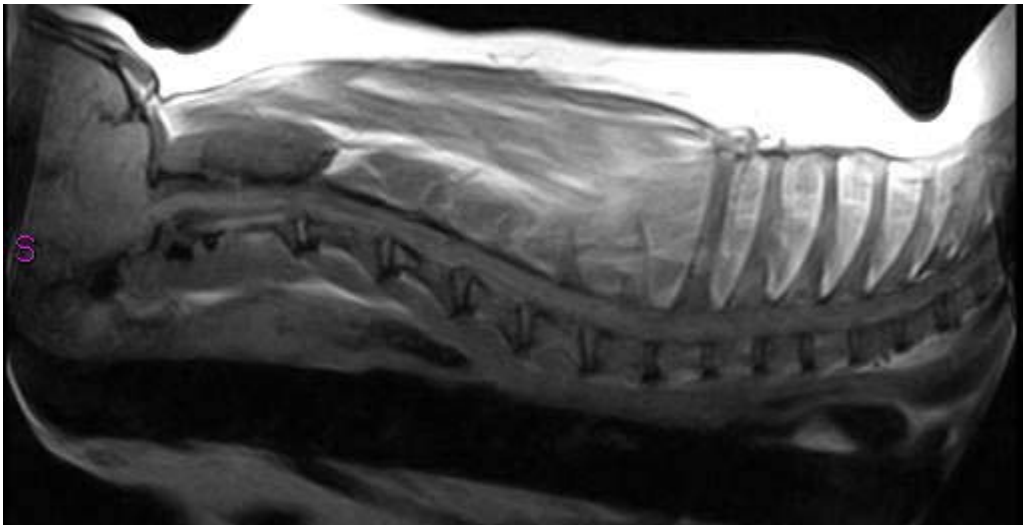




C-Spine Dorsal



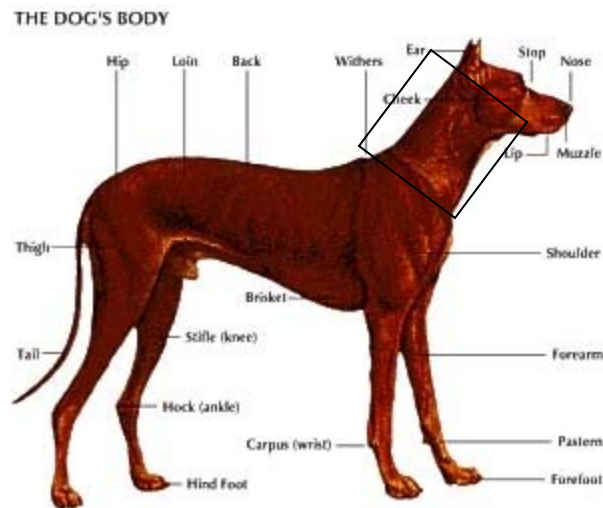
C-Spine Transverse



C-Spine Sagittal

## CERVICAL SPINE (R2111):

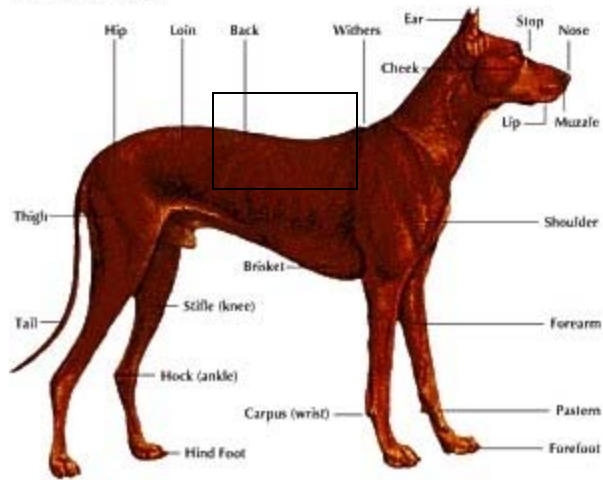
The cervical vertebrae, spinal cord, and surrounding soft tissue are the primary focus of this study. An MRI of the cervical spine will encompass C1-T3. This study may be requested in order to find pathology such as; IVDD, nerve root tumors, FCE's, and spinal neoplasia. An MRI of the cervical spine will include sequences in all planes: dorsal, transverse, and sagittal. Contrast may be given if necessary.



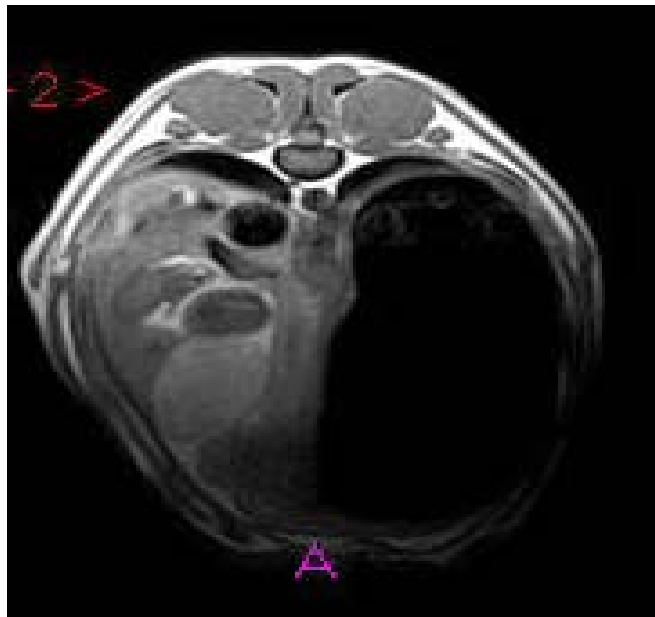
## THORACIC SPINE (R2121):

The thoracic vertebrae, spinal cord, and surrounding soft tissue are the primary focus of this study. An MRI of the thoracic spine will encompass T2-L3. This study may be requested in order to find pathology such as; IVDD, FCE's, discospondylitis, and spinal neoplasia. An MRI of the thoracic spine will include sequences in all planes; dorsal, transverse, and sagittal. Contrast may be given if necessary.

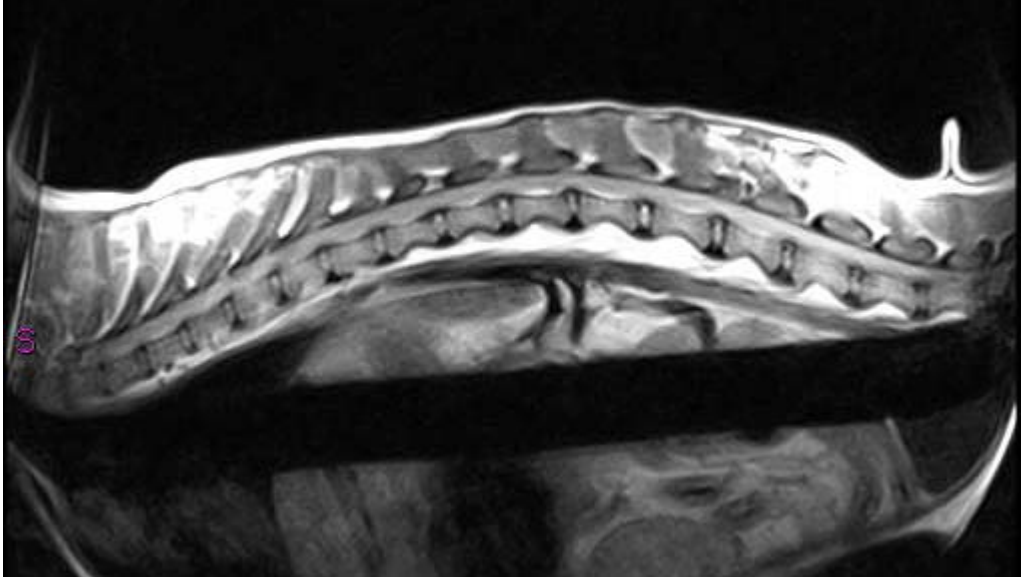
THE DOG'S BODY



T-Spine Dorsal



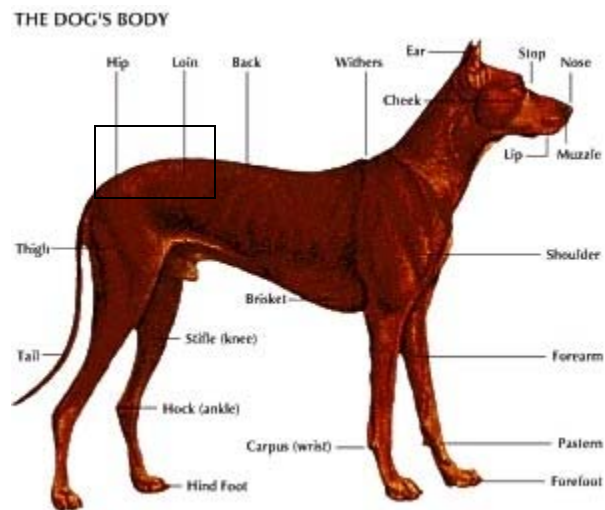
T-Spine Transverse

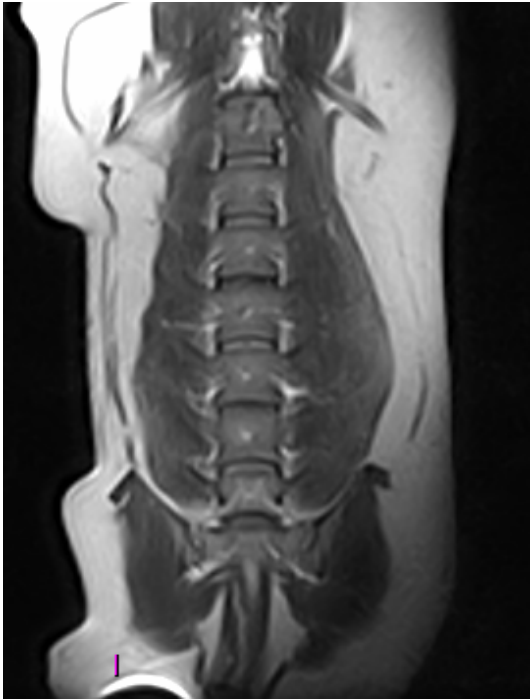


## T-Spine Sagittal

### LUMBAR SPINE (R2131):

The lumbar vertebrae, spinal cord, and surrounding soft tissue are the primary focus of this study. An MRI of the lumbar spine will encompass L3-S3. This study may be requested in order to find pathology such as; IVDD, discospondylitis, spinal neoplasia, and cauda equina syndrome. An MRI of the lumbar spine will include sequences in all planes; dorsal, transverse, and sagittal. Contrast may be given if necessary.

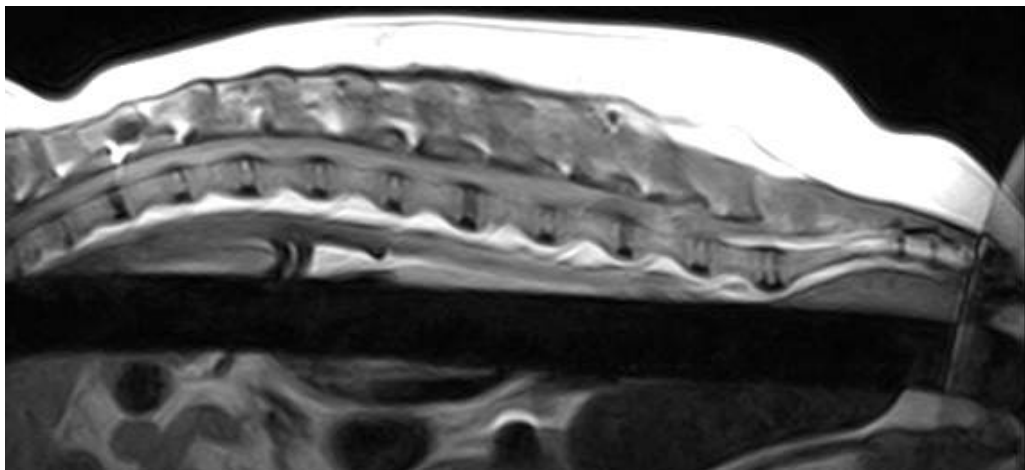




**L-Spine Dorsal**



**L-Spine Transverse**



**L-Spine Sagittal**

## Lumbo-Sacral (R2141):

The lumbo-sacral junction, spinal cord, and surrounding soft tissue are the primary focus of this study. An MRI of the lumbo-sacral junction will encompass L5-S3. This study may be requested in order to find pathology such as; discospondylitis, spinal neoplasia, cauda equina syndrome, and pelvis tumors. An MRI of the lumbo-sacral junction will include sequences in all planes; dorsal, transverse, and sagittal. Contrast may be given if necessary.

