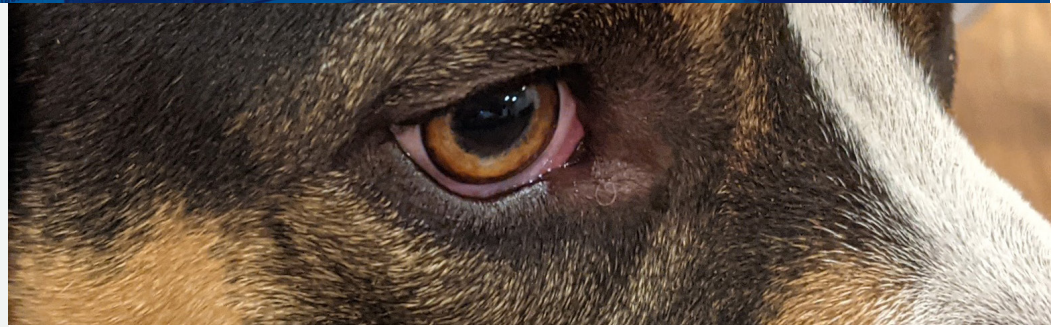




Medication Dispensary

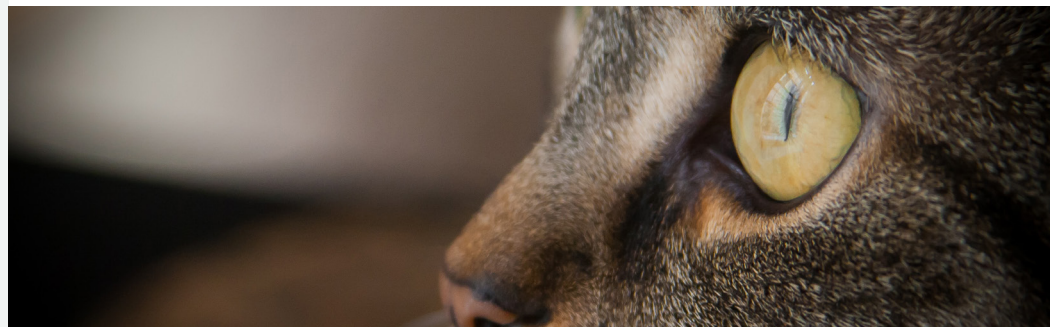
Reminder

To avoid contamination and discomfort, do not touch the tube to the surface of the eye.



Step-By-Step Process

1. Remove any discharge around the eye with a cotton ball moistened with saline solution.
2. **Check the instructions on the tube for dosage.** Most applications are a 1/4-inch ribbon of drug. The following will apply to a 1/4 inch dose. Please adapt these instructions if your dose is different.
3. **After washing your hands,** gently pull back the upper and lower eyelids.
4. Holding the tube parallel to the lower eyelid, squeeze the ointment onto its edge, about the size of a grain of rice for a 1/4 inch ribbon. **DO NOT let the tube touch the eye's surface.**
5. Release the animal's head. **Let your animal blink.**
6. Lightly massage the upper and lower eyelids together to spread the medication.



VETERINARY TEACHING HOSPITAL

Large Animal Clinic

Emergency, specialty, and primary care for horses and farm animals
1102 W. Hazelwood Drive, Urbana
(217) 333-2000

Small Animal Clinic

Emergency and specialty services for small companion animals
1008 W. Hazelwood Drive, Urbana
(217) 333-5300

South Clinic

Health and wellness care for dogs, cats, and zoological pets
2100 Goodwin Avenue, Urbana
(217) 244-2555

Midwest Equine

Equine-only practice that provides equine veterinary and farrier services
20844 Cumberland Road, Farmer City
(309) 928-2127