

COMMON CUTANEOUS MASSES

Anne Barger, DVM, DACVP
University of Illinois

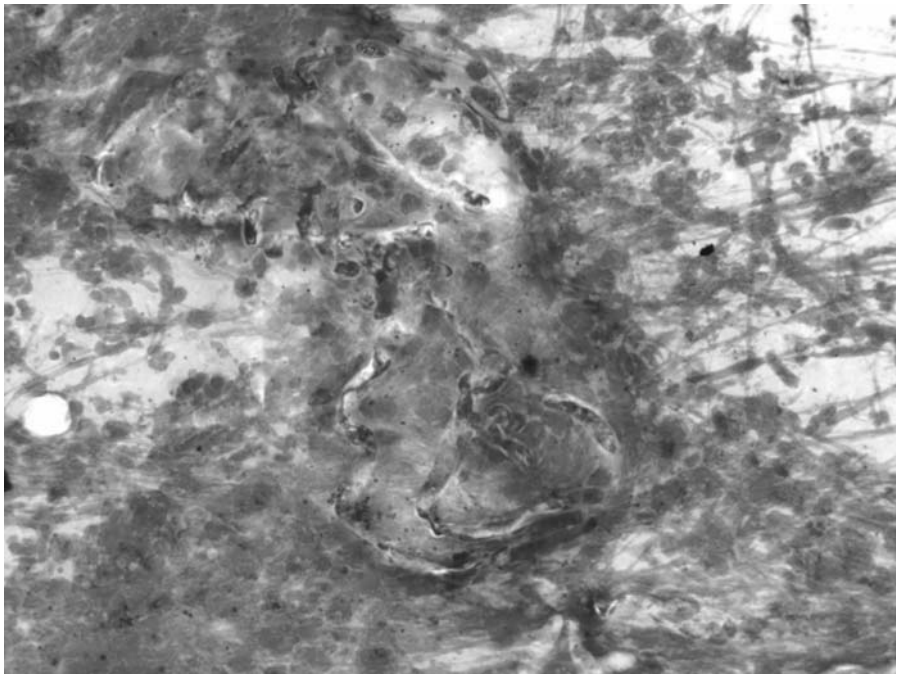
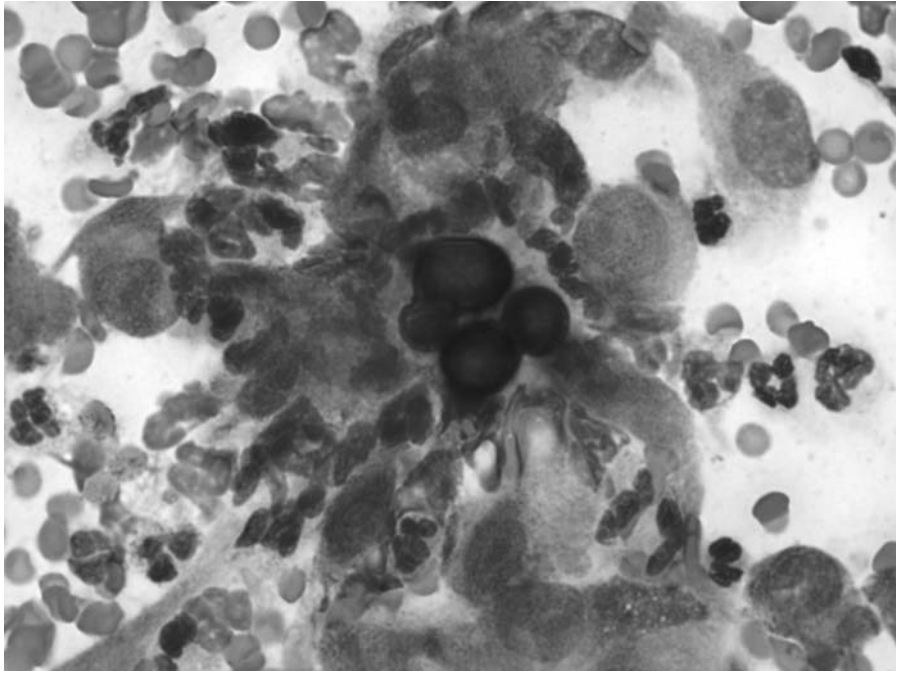
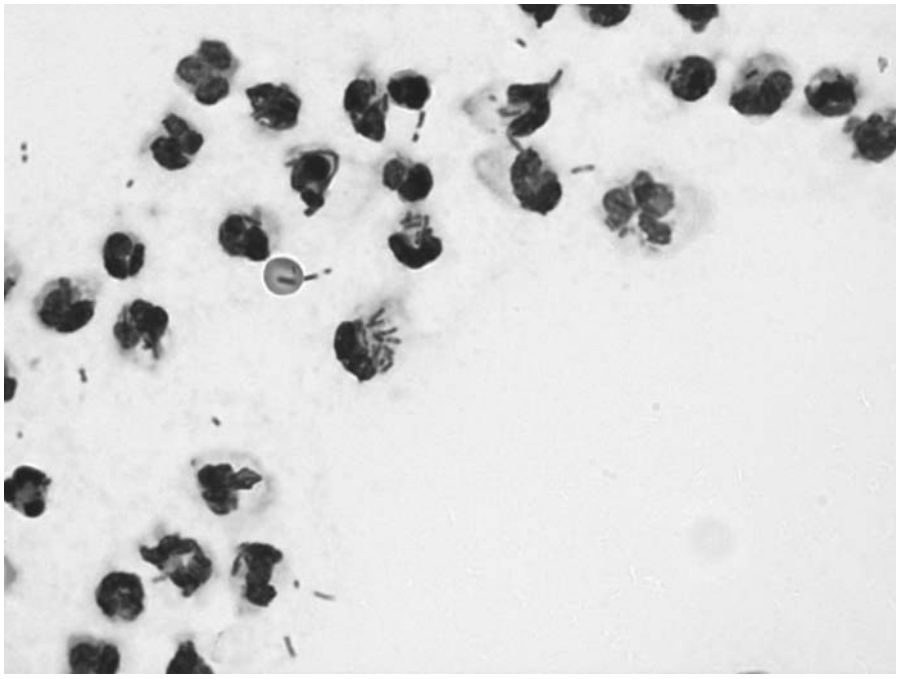
CUTANEOUS MASSES

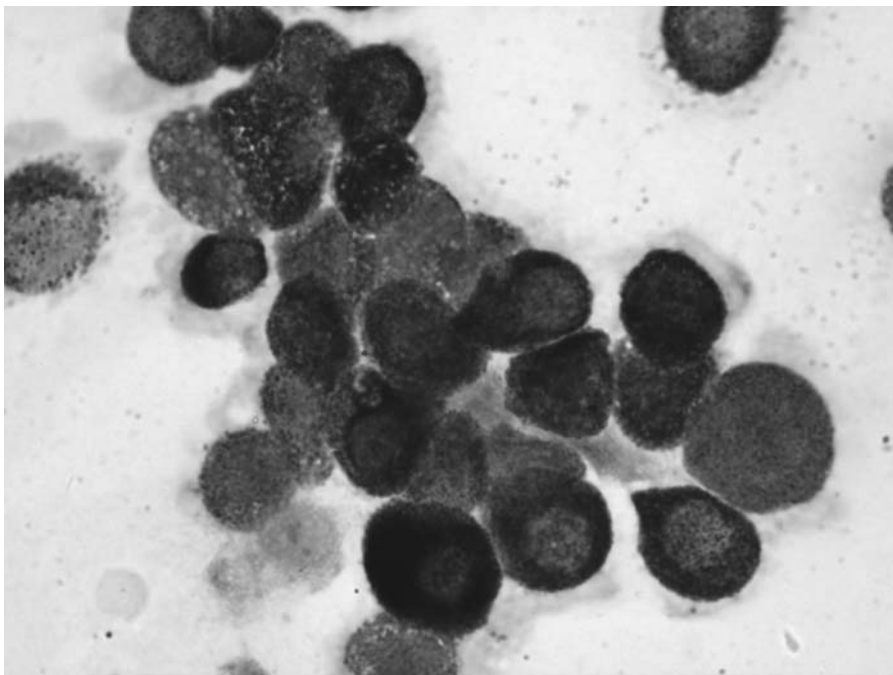
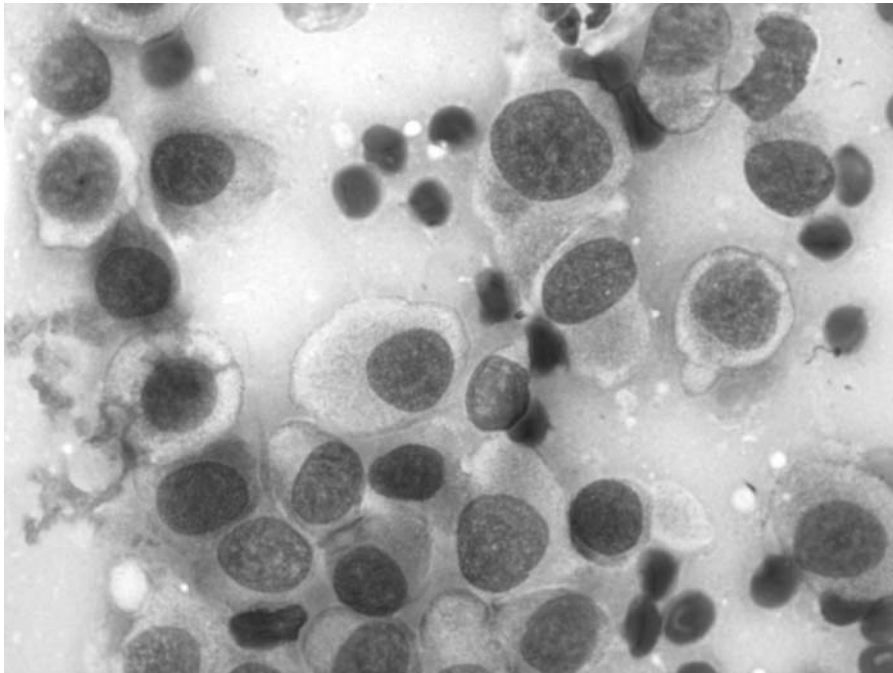
- Lumps and bumps
- Dermal vs. Subcutaneous
 - Impact diagnosis
 - Differential list

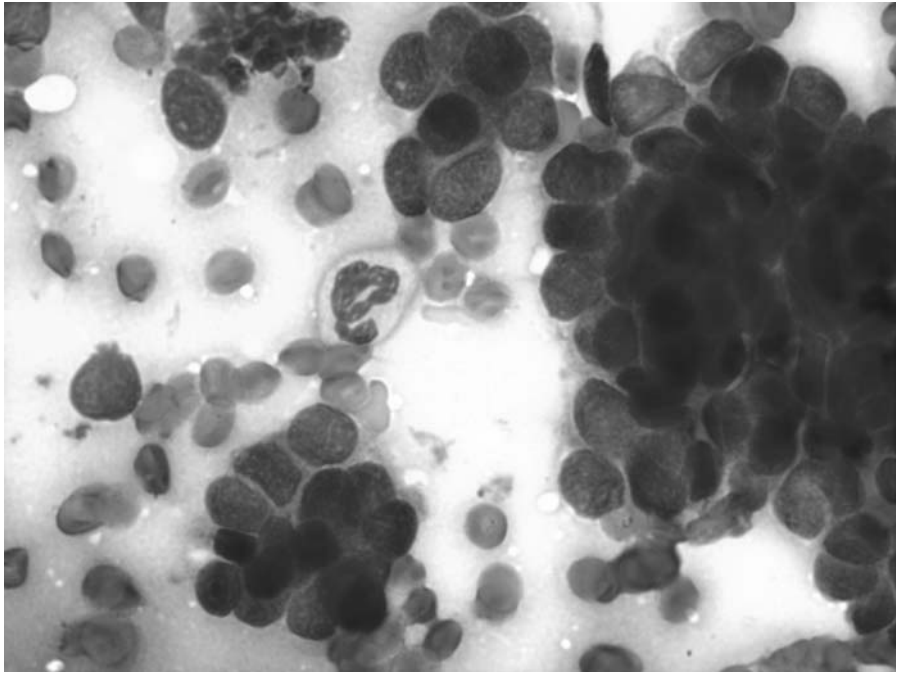
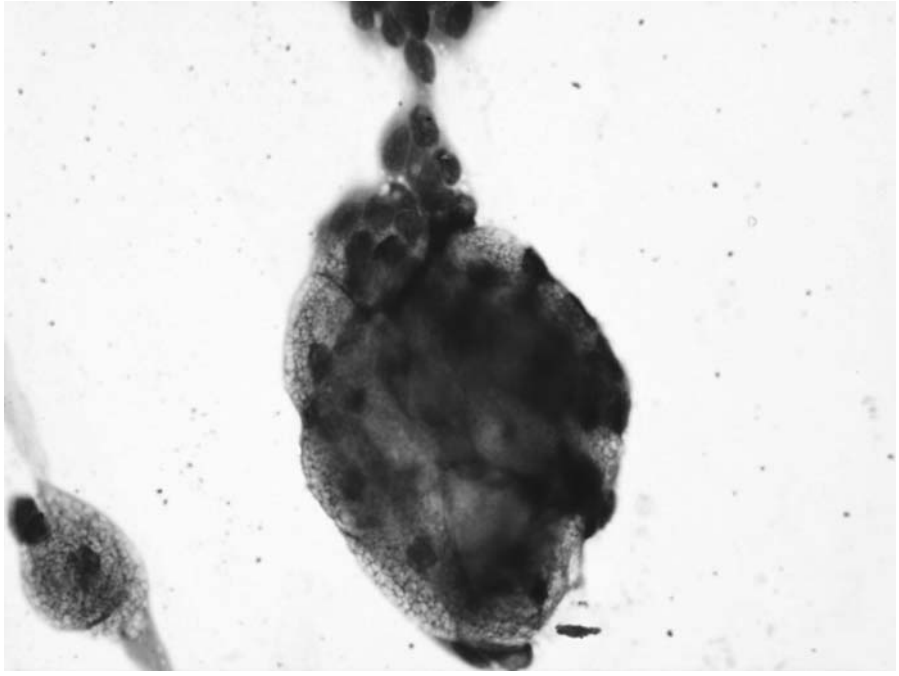
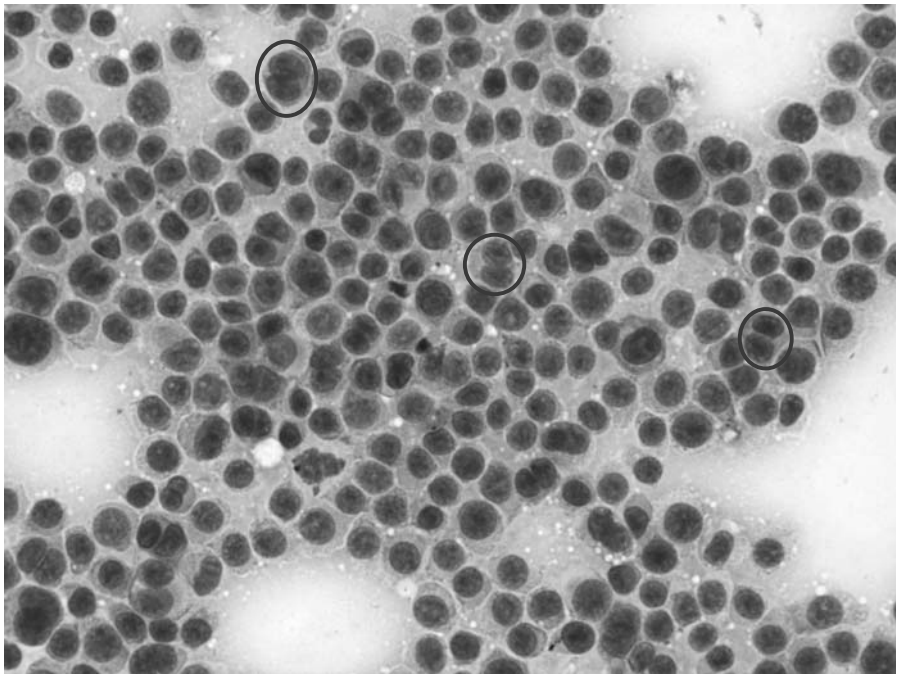


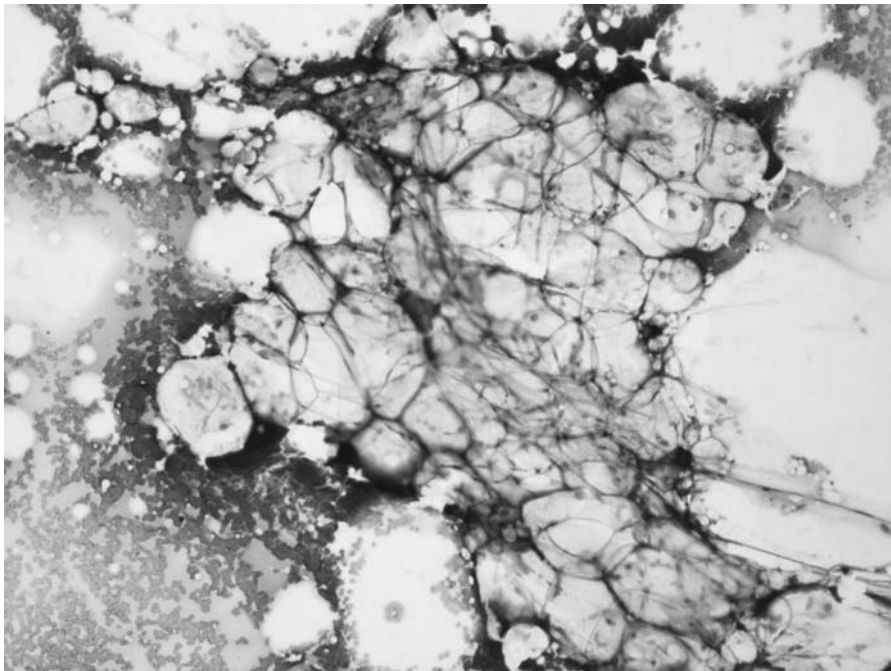
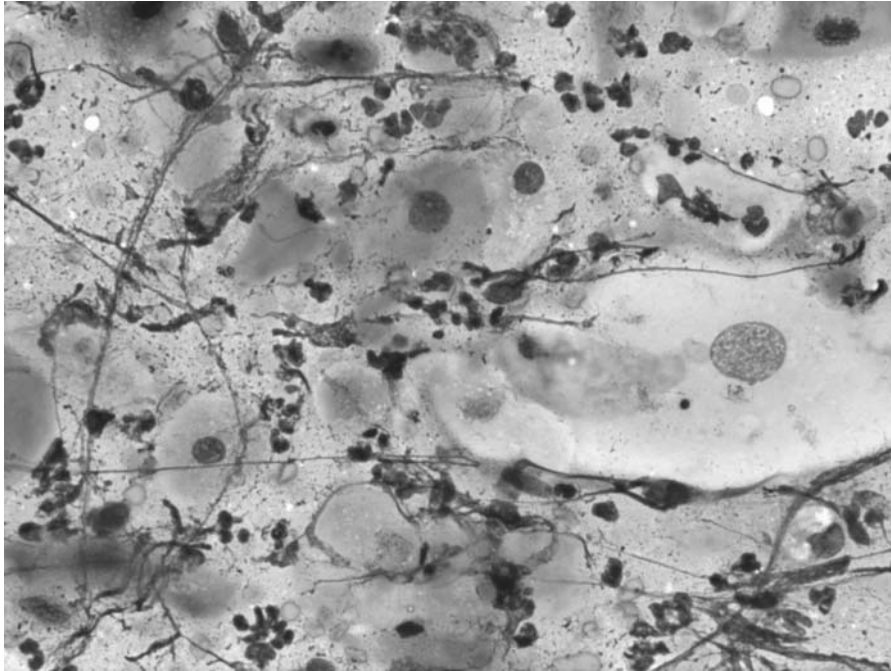
LUMPS AND BUMPS

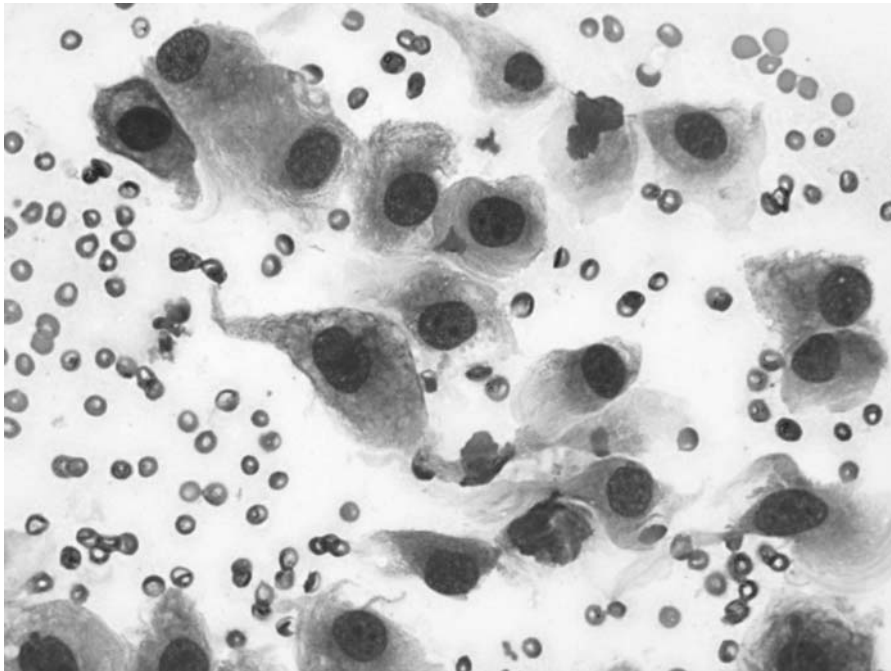
- Inflammation
 - Granuloma, pyogranuloma, abscess
- Neoplasia and cysts
 - Benign vs. malignant
 - Tissue type
 - Epithelial
 - Mesenchymal
 - Round cell









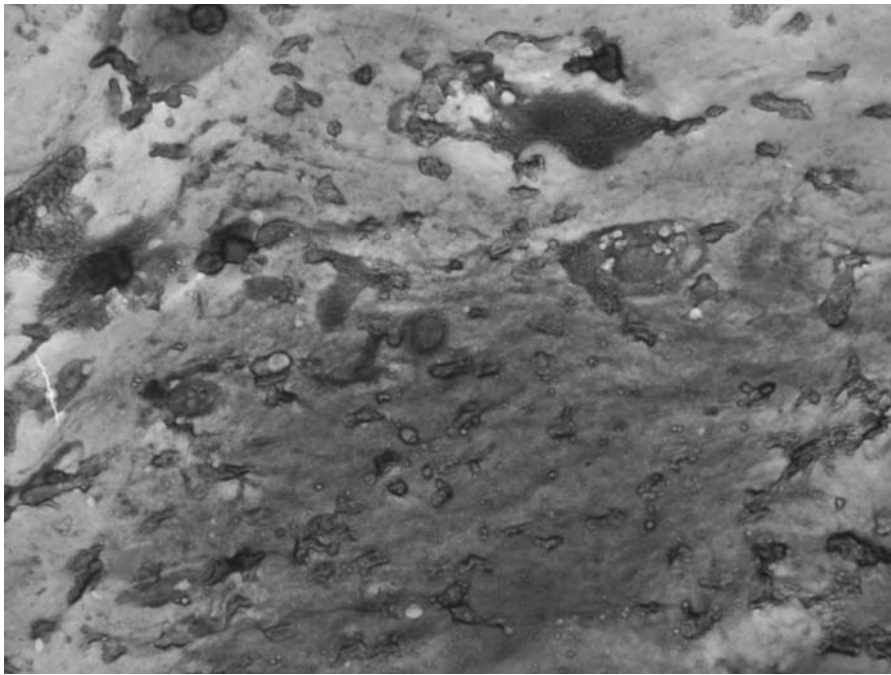


MESENCHYMAL NEOPLASIA

◎ Feline Vaccine Associated Sarcoma

- Behavior
 - Aggressive
 - Fast growing
 - Locally Invasive
- Tumor types
 - Fibrosarcoma
 - Histiocytic Sarcoma
 - Osteosarcoma
 - Chondrosarcoma
 - Rhabdomyosarcoma





CONCLUSIONS

- ◉ Many diagnoses can be made with cytology
- ◉ Often the common masses have very distinct cytologic features that can be differentiated from one another
- ◉ If you ever have a question about a cytology, consult a clinical pathologist

QUESTIONS????

