



I

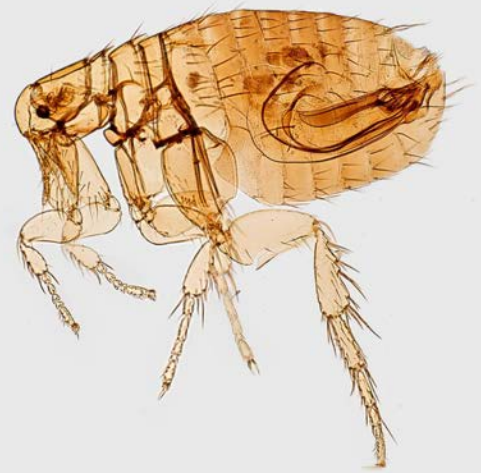


# Parasitology Booth

---

# Fleas

- Fleas are tiny insects that will bite and suck the blood from your pet! They look like little black dots on the fur and their bites are super itchy.
- **Can dog/cat fleas live in human hair? Not at all!** We can still get bitten by them if our pets have them so preventing fleas from spreading is super important.
- Flea treatments go on their skin, usually between their shoulders. Brands like Advantage, Frontline, and Revolution are effective at killing fleas!
  - The University of Illinois does not endorse any commercial product. These products are not mentioned in exchange for sponsorship



---

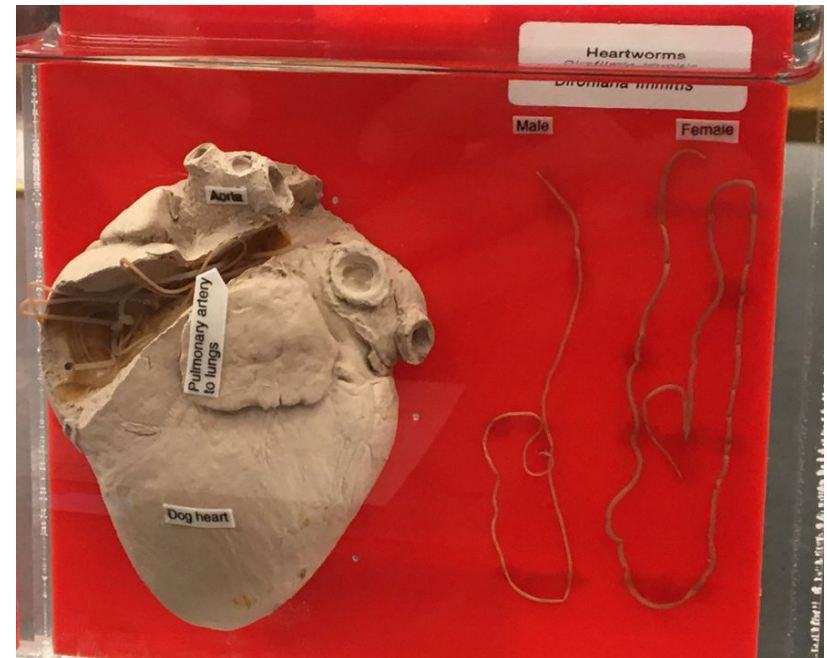
# Lice

- Another insect that causes severe itching with their bites are lice!
- Lice can also spread tapeworms (a dog parasite) and can affect dogs, cats, horses, cows, chickens, and us!
- **If my dog has lice and sleeps on my pillow, can I get lice from them? Nope!** Lice are species-specific, so they only bite the animals they were made to bite.
- Treatment varies depending on the species, but they usually go on their skin and fur.



# Heartworm (Dirofilaria Immitis)

- Heartworms are tiny white worms that are quite dangerous to dogs.
- A mosquito that has heartworms will bite a dog, giving that dog heartworm larvae. The larvae will mature in the dog, and can clog the arteries and even the heart. This can lead to difficulty breathing and even death since the heart can't function the way it's supposed to.
- **Can my cat get heartworms? Yes!**
- Treatment to kill the worms is painful and expensive, so it's super important to prevent heartworm with monthly chewables or shots!



---

# FACT OR FICTION: Cats can get Heartworms?

- *Culex spp.* Mosquito feeds on BOTH cats and dogs
- Cats are more resistant to infection from adult *Diroflaria immitis* than dogs
- Indoor cats are at risk
- Clinical Signs
  - ◆ chronic respiratory disease such as increased respiratory rate
  - ◆ intermittent coughing
  - ◆ increased respiratory effort
  - ◆ occasionally, vomiting will occur



# FACT OR FICTION: Cats can get Heartworms?



- *Culex spp.* Mosquito feeds on BOTH cats and dogs
- Cats are more resistant to infection from adult *Dirofilaria immitis* than dogs
- Indoor cats are at risk
- Clinical Signs
  - ◆ chronic respiratory disease such as coughing
  - ◆ increased respiratory rate
  - ◆ intermittent coughing
  - ◆ increased respiratory effort
  - ◆ occasionally, vomiting will occur

# CONFIRM OR BUST: Adult Hookworms actually look like hooks

- *Ancylostoma caninum* primarily affects dogs
- They have hooks on their mouth to help them attach but they do not look like hooks
- Routes of Infection
  - Ingestion of larvae
  - Skin penetration
  - Transplacental
  - Colostrum (the first milk a baby receives)
- Clinical Signs
  - Dark, tarry stool
  - Anemia
  - In humans: Red, itchy linear tracts under skin





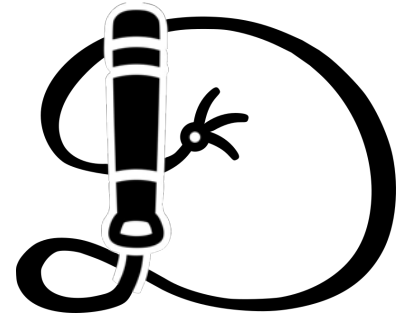
# CONFIRM OR DUBIOUS: Adult Hookworms usually look like hook

- *Ancylostoma* primarily affects dogs
- They have mouthparts on the mouth to help them attach but
- look like hook
- Routes of Infection
  - Ingestion of larvae
  - Transplacental
  - Colostrum (the first milk a baby receives)
- Clinical Signs
  - Dark, tarry stool
  - Anemia
  - In humans: Red, itchy linear tracts under skin



# MYTH OR REALITY: Adult Whipworms actually look like whips

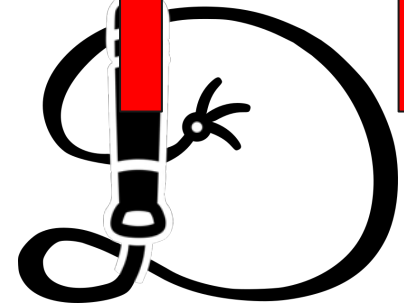
- *Trichuris vulpis* are common among dogs
- The front end of the adult worm is very thin (whip) and the hind end is thicker (whip handle)
- Another type can infect cats but it occurs way less than dog infections
- Clinical Signs
  - Weight loss
  - Bloody diarrhea
  - General exhaustion



## MYTH OR REALITY: Adult Whipworms actually

**REALITY**

- *Trichuris vulpis* are common among dogs
- The front end of the adult worm is very thin (whip) and the hind end is thicker (whip handle)
- Another type can infect cats but it occurs way less than dog infections
- Clinical signs
  - Weight loss
  - E
  - General exhaustion



---

# TRUTH OR TALE: Adult Roundworms are in the shape of a circle

- *Toxocara canis* is the most common intestinal parasite of dogs
- A variant can infect cats and is one of the most common intestinal parasites in cats
- Roundworms can infect humans, too!
- Adult roundworms have a long tube shaped body but the eggs are in the shape of a circle
- Clinical Signs
  - Vomiting
  - Diarrhea
  - Coughing
  - Puppies have a potbelly appearance



# TRUTH OR TALE: Adult Roundworms are in the shape of a **TALE**

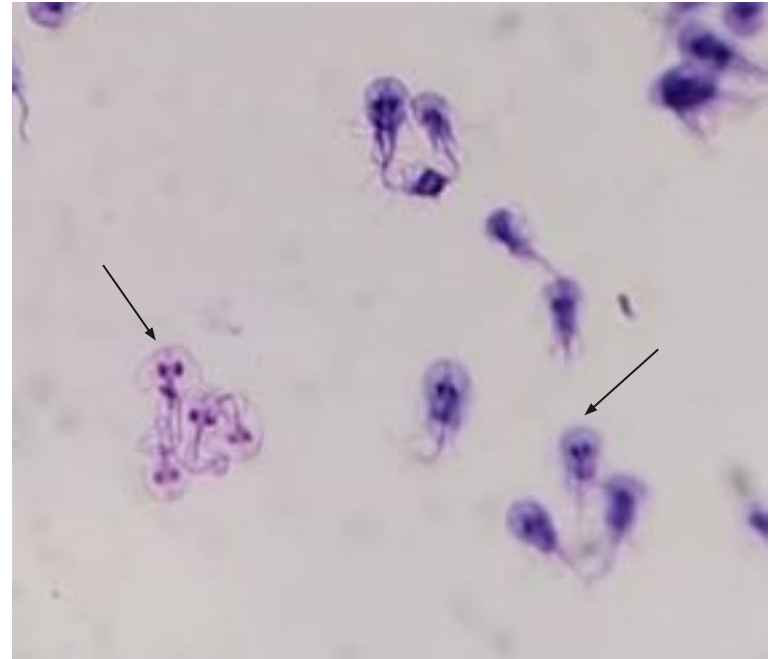
- *Toxocara canis* is the most common intestinal parasite of dogs
- A variant can infect cats and is one of the most common intestinal parasites in cats
- Roundworms can infect humans too!
- Adult roundworms have a long body but the eggs are in the shape of a circle
- Clinical Signs
  - Vomiting
  - Diarrhea
  - Coughing
  - Puppies have a potbelly appearance



---

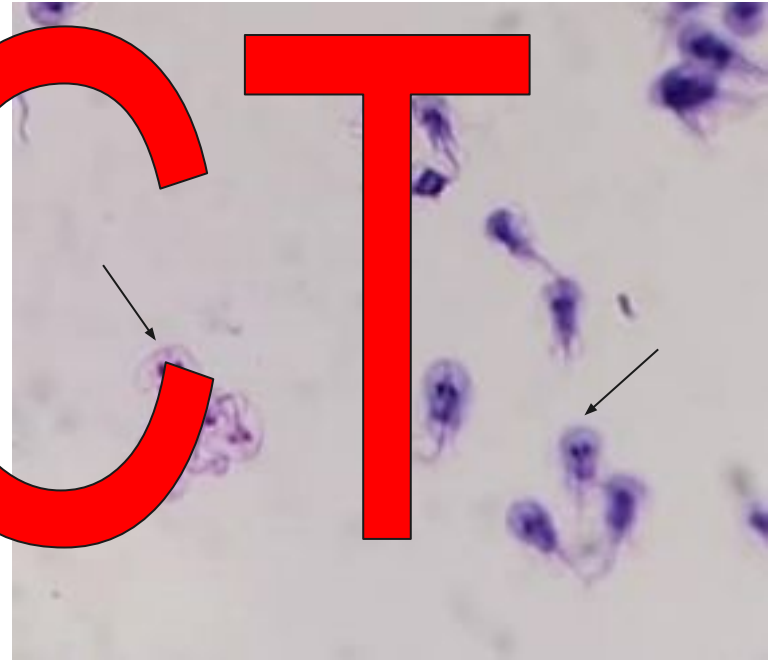
# FACT OR PHONY: Giardia looks like a monkey's face!

- Hosts = humans, dogs, cats, other mammals, birds, and amphibians
- Transmission:
  - drinking or swallowing water contaminated with *Giardia*
  - Eating undercooked food contaminated with *Giardia*
  - Touching contaminated objects/surfaces and then making contact with contaminated hand to your mouth



# FACT OR PHONY: Giardia looks like a monkey's face!

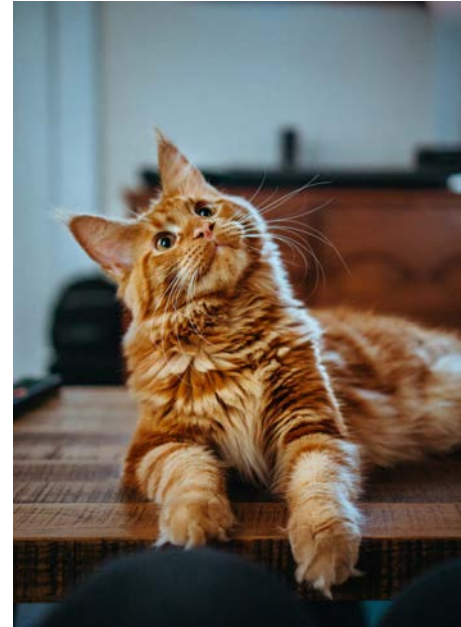
- Hosts = humans, dogs, cats, other animals, birds, and amphibians
- Transmission
  - drinking untreated water contaminated with *Giardia*
  - Eating undercooked food with *Giardia*
  - Touching contaminated objects/surfaces and then making contact with contaminated hand to your mouth



---

# TRUTH OR TALE: Toxoplasmosis is dangerous to pregnant women!

- Toxoplasmosis is caused by the organism *Toxoplasma gondii* from cats
- Cats develop pneumonia, anorexia, depression and sudden death
- Dogs develop pneumonia and encephalitis
- Humans are mostly asymptomatic but can experience fever, malaise, and encephalitis (brain inflammation)





# TRUTH OR TALE: Toxoplasmosis is dangerous to

# TRUTH

- Toxoplasmosis is caused by the organism *Toxoplasma gondii* from cats
- Cats develop prostration, anemia, depression and sudden death
- Dogs develop pneumonia and encephalitis
- Humans are mostly asymptomatic but can experience fever, malaise, and encephalitis (brain inflammation)

