



HEARTWORM DISEASE IN DOGS



CARDIOLOGY BOOTH: CLAUDIA PERKOWSKI, MARISSA ZERKOWSKI (AHS)

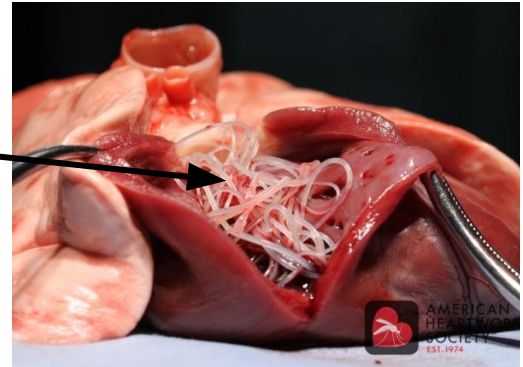


**AMERICAN
HEARTWORM
SOCIETY™**
EST. 1974

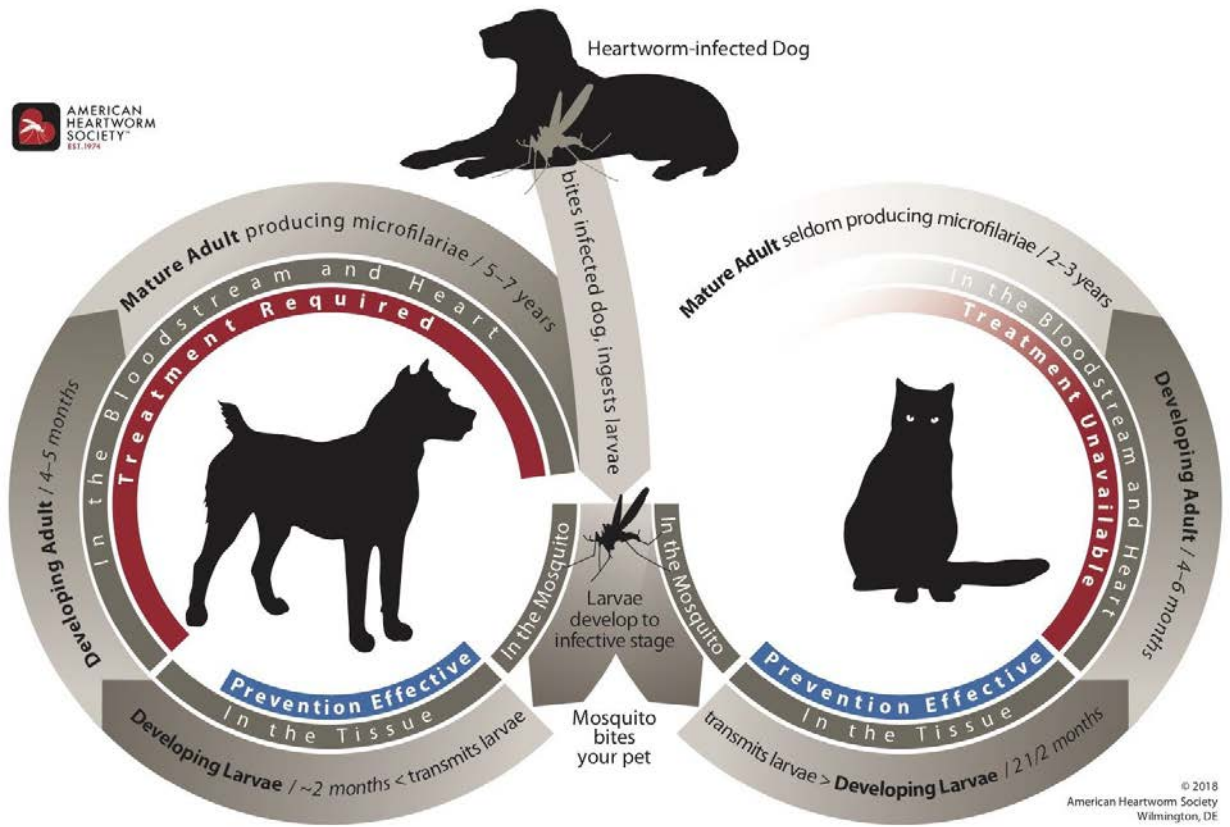
WHAT IS HEARTWORM DISEASE?

HEARTWORM DISEASE IS CAUSED BY *DIROFILARIA IMMITIS*, A PARASITE TRANSFERRED TO DOGS BY A MOSQUITO BITE. THIS PARASITE LIVES AND GROWS IN THE DOG'S HEART, CAUSING SEVERE ORGAN DAMAGE AND EVEN DEATH WITHOUT TREATMENT.

HEARTWORMS



HEARTWORM LIFE CYCLE



SYMPTOMS OF HW DISEASE?

DOGS:

- MILD PERSISTENT COUGH
- RELUCTANCE TO EXERCISE
- FATIGUE AFTER MODERATE ACTIVITY
- DECREASED APPETITE
- WEIGHT LOSS
- HEART FAILURE
- CAVAL SYNDROME (SUDDEN ONSET OF LABORED BREATHING, PALE GUMS, DARK BLOODY URINE)



SYMPTOMS OF HW DISEASE?

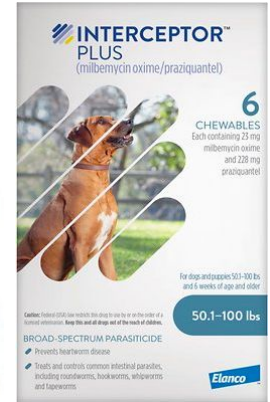
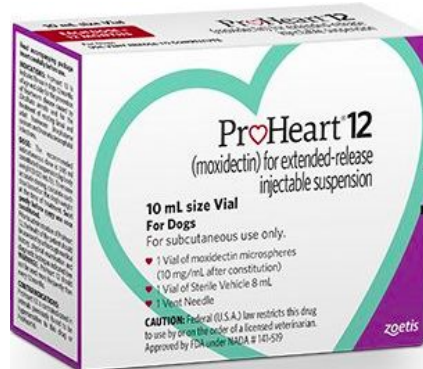


CATS:

- COUGHING
- ASTHMA-LIKE ATTACKS
- PERIODIC VOMITING
- LACK OF APPETITE
- WEIGHT LOSS
- FAINTING OR SEIZURES
- SUDDEN DEATH

GOOD NEWS: HEARTWORM DISEASE IS PREVENTABLE!

ROUTINE BLOOD TESTING AND HEARTWORM PREVENTION MEDICATIONS WILL MONITOR AND STOP INFECTIONS FROM HAPPENING.



*PREVENTING HEARTWORM DISEASE IS MUCH CHEAPER AND SAFER THAN TREATING AN ALREADY EXISTING INFECTION. TREATING AN INFECTION CAN COST MORE THAN \$1000 WHILE MONTHLY PREVENTION IS SO MUCH MORE AFFORDABLE!

The University of Illinois does not endorse any commercial product. These products are not depicted in exchange for sponsorship.

MYTH: YEAR-ROUND HEARTWORM PREVENTION IS NOT NEEDED, ESPECIALLY DURING COLDER MONTHS.

THIS IS FALSE. ALTHOUGH MOSQUITOS ARE LESS PREVALENT DURING THE WINTER, THEY CAN STILL SURVIVE AND INFECT DOGS DURING UNSEASONABLY WARMER SPELLS.

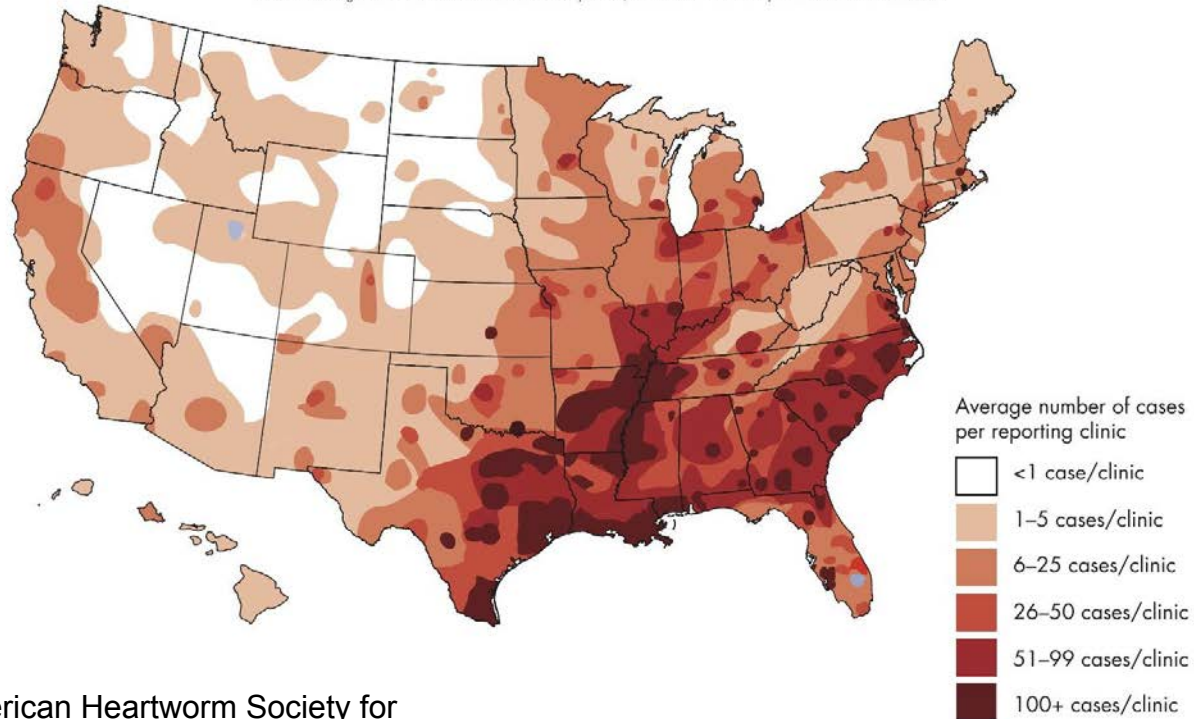
YEAR-ROUND MEDICATION WILL PREVENT THE RISK OF INFECTION AND WILL HELP OWNERS STAY ON TRACK WITH REGULAR DOSING ROUTINES.



2019 HEARTWORM INCIDENCE



© American Heartworm Society The severity of heartworm incidence as shown in this map is based on the average number of cases per reporting clinic.
Some remote regions of the United States lack veterinary clinics, therefore we have no reported cases from these areas.



Thank you to the American Heartworm Society for permission to use several images in this presentation.