

Illinois Cow Instructions

Basic Interface

Download the cow target image at: http://go.illinois.edu/i_cow_trigger and print.
Download the app to your device and turn on. Point your device at the target.

The **System** dropdown menu allows you to navigate through all of the labeled anatomical structures system by system.

The colored icons on the left side represent each of the anatomical systems. When pressed, these icons turn each of the anatomical systems they represent on and off.

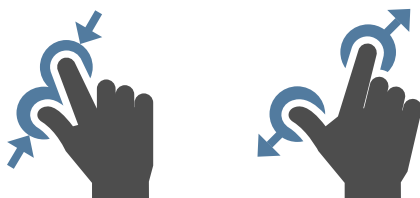
You can also access our website to download the cow target image or these instructions **from** your App screen when you press these buttons.









Turn the skin off by pressing the **Integumentary System icon button**.

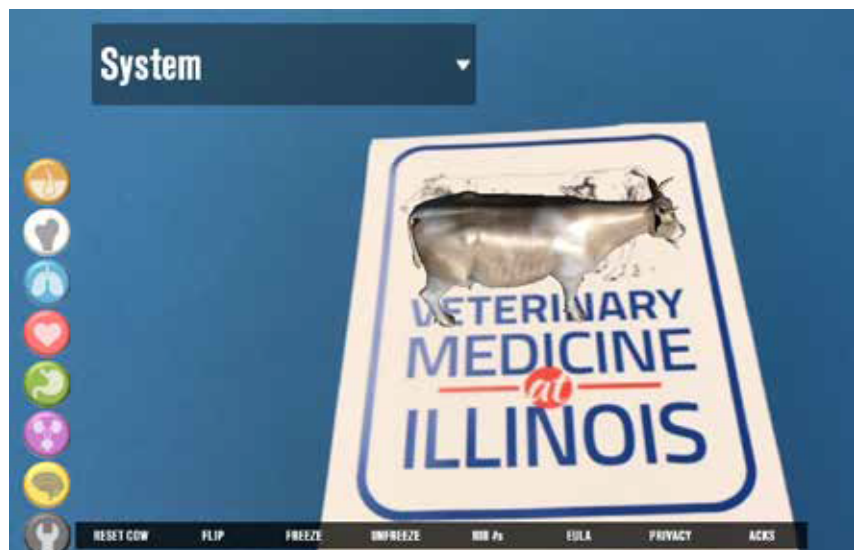
The gray **Tools** icon at the bottom, opens a menu bar across the bottom of the screen with additional options.

Zoom

Zoom in and out, making the cow larger or smaller, by spreading and closing your index finger and thumb against your device screen.



-  Integumentary System
-  Skeletal System
-  Respiratory System
-  Circulatory System
-  Gastrointestinal System
-  Urogenital System
-  Nervous System
-  Tools



Rotate

You can rotate the cow by manually turning the printed target or by walking around the target with your device **focused on the target**.



What options are included under the Tools icon?

Pressing the **Flip** button rotates the cow 90 degrees clockwise.

Pressing the **Reset Cow** button, turns all of the structures back on.



Pressing the **Freeze** button holds the cow in place on the screen, even if your device is no longer focused on the target.

Unfreeze makes the cow responsive once again to device, and user must focus device on target.



Pressing the **EULA** button displays the End User License Agreement.

Pressing the **Privacy** button displays the Privacy Agreement.

Pressing the **ACKS** button displays the Acknowledgments Page.

Pressing the **RIB#s** button, turns on a set of white numbers on either side of the cow corresponding to the position of each rib.

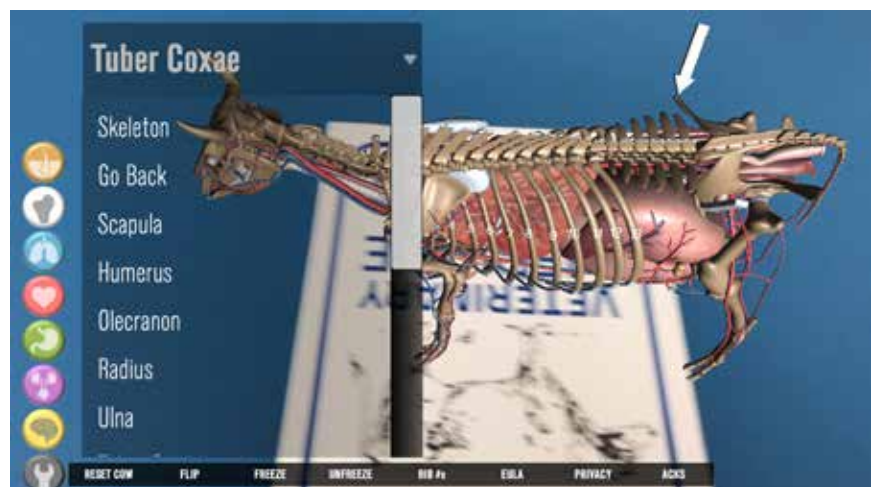


How do I navigate through the Anatomical Systems?

The **Anatomical Systems** are displayed in the dropdown menu in the same order as the their corresponding visibility buttons are displayed along the left side. In general, anatomically labeled features will be listed from distal to proximal (outside to inside); rostral to caudal (head to tail); and dorsal to ventral (top to bottom). The only exception to this is the GI (gastrointestinal) system. For the GI system; the major accessory organs will be listed first; then the structures follow the pathway of digestion from mouth to anus.

When internal structures are chosen, the app is designed to automatically turn off the systems that would normally cover the structure. For instance, when choosing a skeletal structure, the skin is automatically turned off.

To see structures more clearly; the viewer also has the option to turn the visibility buttons and Rib#s on and off, as well as freeze the screen. Most of the labeling features will continue to work, even when the cow is frozen.



When you choose a system, the header text of the dropdown menu will change to the color of its corresponding visibility button and the dropdown menu will list all of the structures that have indicator arrows.

To see the entire list of structures, move the scroll bar on the left side of the dropdown menu with your finger.

The **Integumentary System (skin)** demonstrates **Anatomical Markers** on the cow used by veterinarians for clinical examination.



After choosing a structure in the dropdown menu, that structure will appear in its system color at the top of the dropdown menu and a white arrow pointing to it will appear on the cow. If the structure is symmetrical (appears on both the left and right side of the cow); two arrows will appear.

Arrows are used to indicate a structure and **dotted lines** are used to indicate an area in which the structures lies.



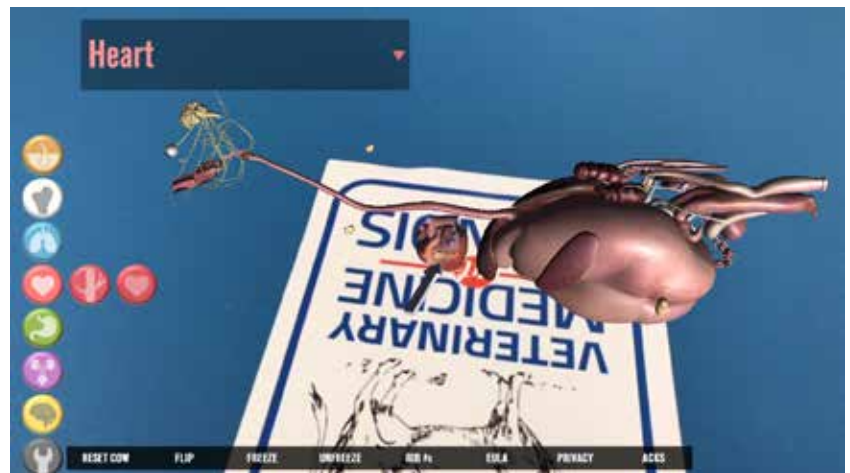
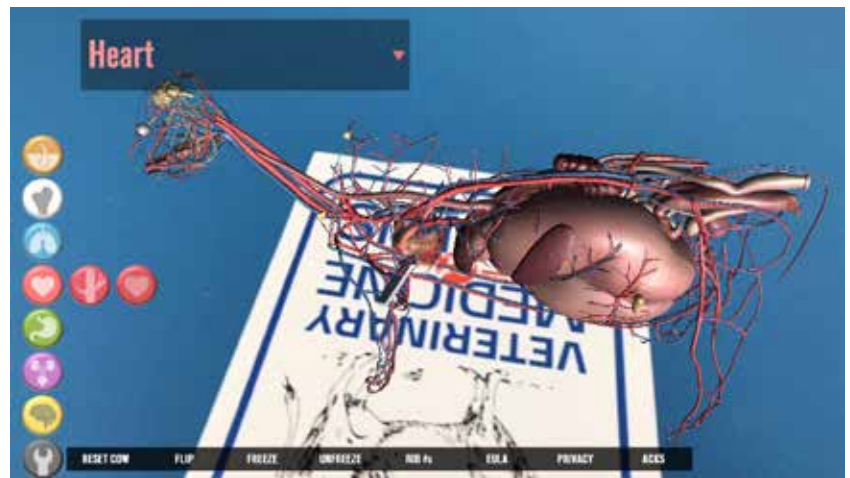
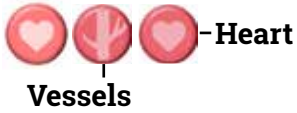
Each system dropdown menu, contains a **Go Back** button, to take you back to the main Systems



Special Features

To enhance visibility, fly out buttons are included for the **Circulatory system**, which allow you to turn the vessels and heart on and off independently.

Entire Circulatory system



GI system specific features

The GI dropdown menu lists the major structures of the system. When a major structure is chosen its corresponding arrow will appear; when you touch the arrow, it's specific name will appear in green text to the right of the dropdown menu.

If a major structure has substructures such as the Duodenum, more than one arrow will appear. Touch each arrow along the tubular structure and its name will appear in green text to the right of the dropdown menu.

It might be helpful to **Freeze** the view, to more easily touch the arrows. Green and yellow dotted rings also appear along tubular structures to indicate the beginning and end of a structure.

